

Norwich to Tilbury

Volume 6: Environmental Statement

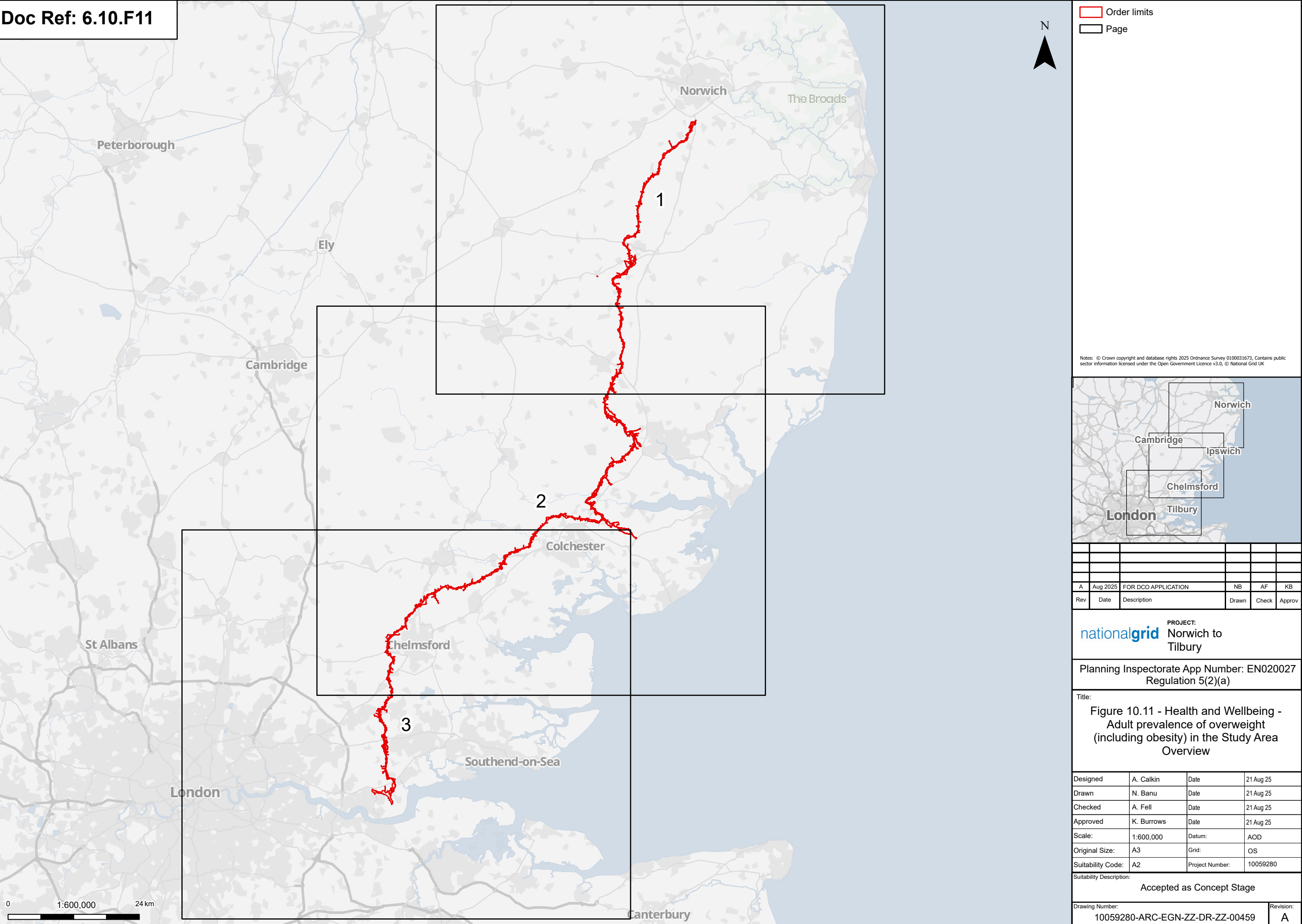
Document: 6.10.F11 Environmental Statement Figure 10.11 - Adult prevalence of overweight (including obesity) in the Study Area

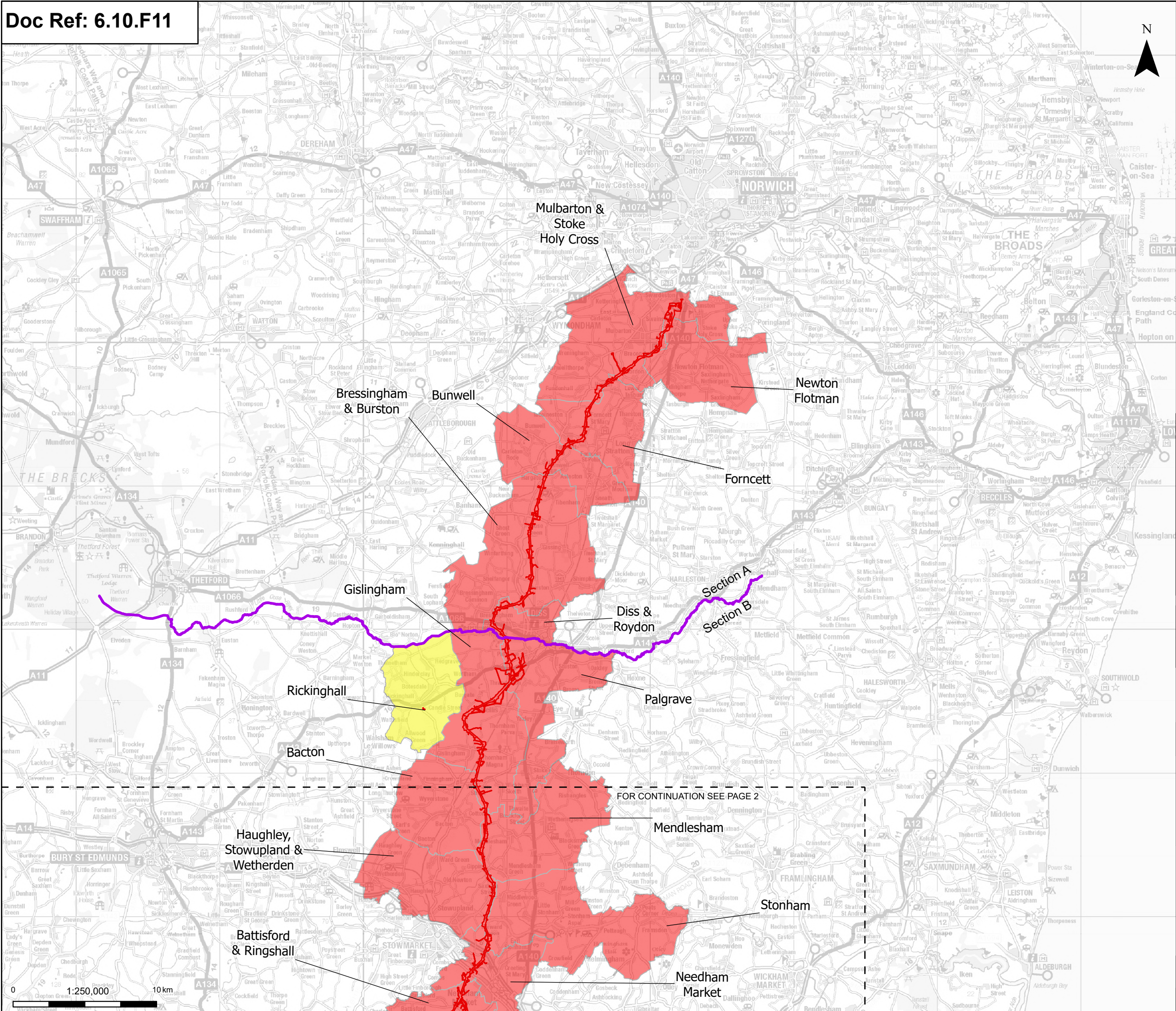
Final Issue A

August 2025



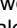



Planning Inspectorate Reference: EN020027

Infrastructure Planning (Applications: Prescribed Forms and Procedure) Regulations 2009 Regulation 5(2)(a)



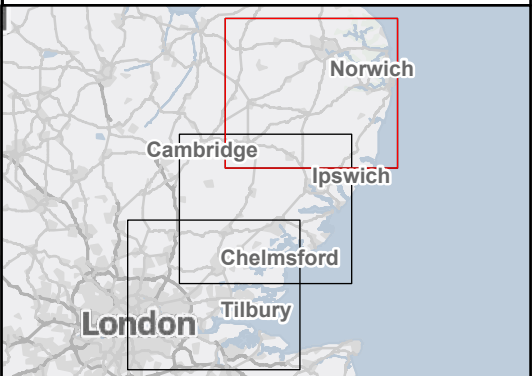


Legend:

-  Order limits
-  Project section line
-  Sheet index outline
- Discipline specific constraints**
 - Overweight (including obesity) prevalence (%) in adults
 -  11.1 - 35 %
 -  35 - 55 %
 -  55 - 74 %

Note: There are no wards outside of the 11.1 - 74 % range.

For further details regarding the design, please refer to Figures 4.1 (document reference 6.4.F1) and 4.2 (document reference 6.4.F2).



A	Aug 2025	FOR DCO APPLICATION	NB	AF	KB
Rev	Date	Description	Drawn	Check	Approv

nationalgrid PROJECT: Norwich to Tilbury

Planning Inspectorate App Number: EN020027 Regulation 5(2)(a)
--

Title: Figure 10.11 - Health and Wellbeing - Adult prevalence of overweight (including obesity) in the Study Area
Page 1 of 3

Designed	A. Calkin	Date	21 Aug 25
Drawn	N. Banu	Date	21 Aug 25
Checked	A. Fell	Date	21 Aug 25
Approved	K. Burrows	Date	21 Aug 25
Scale:	1:250,000	Datum:	AOD
Original Size:	A3	Grid:	OS
Suitability Code:	A2	Project Number:	10059280

Suitability Description:

Accepted as Concept Stage

Drawing Number:	Revision:
10059280-ARC-EGN-ZZ-DR-ZZ-00459	A

